

# COVID-19 GUIDANCE FOR ORGANIZED SPORTS AND TOURNAMENTS

---

## Mitigation Plan

Last Updated February 2021

**Tucson Leagues | Sports Park Tucson**

6901 N casa Grande Hwy  
Tucson, AZ 85743

520-333-5862  
[contact@tucsonleagues.com](mailto:contact@tucsonleagues.com)



# GUIDANCE FOR ORGANIZED SPORTS at Sports Park Tucson

FOLLOWING THE CENTERS FOR DISEASE CONTROL AND PREVENTION (CDC) GUIDANCE, UNDER ALL CIRCUMSTANCES, THE FOLLOWING PRECAUTIONS SHOULD BE ADHERED TO BY THOSE FACILITATING AND PARTICIPATING IN ORGANIZED SPORTS/TOURNAMENTS:

- Stay home if sick.
- Protect yourself:
  - Stay at least 6-feet away from other participants and activity facilitators.
  - If you are at higher risk for severe illness, you should avoid attending/participating in or coaching organized leagues and tournaments. People at higher risk for severe illness include adults 65 or older and people of any age who have serious underlying medical conditions.
  - Do not touch your eyes, nose, or mouth.
  - After leaving the organized activity use hand sanitizer. When you get home, wash your hands with soap and water for at least 20 seconds.

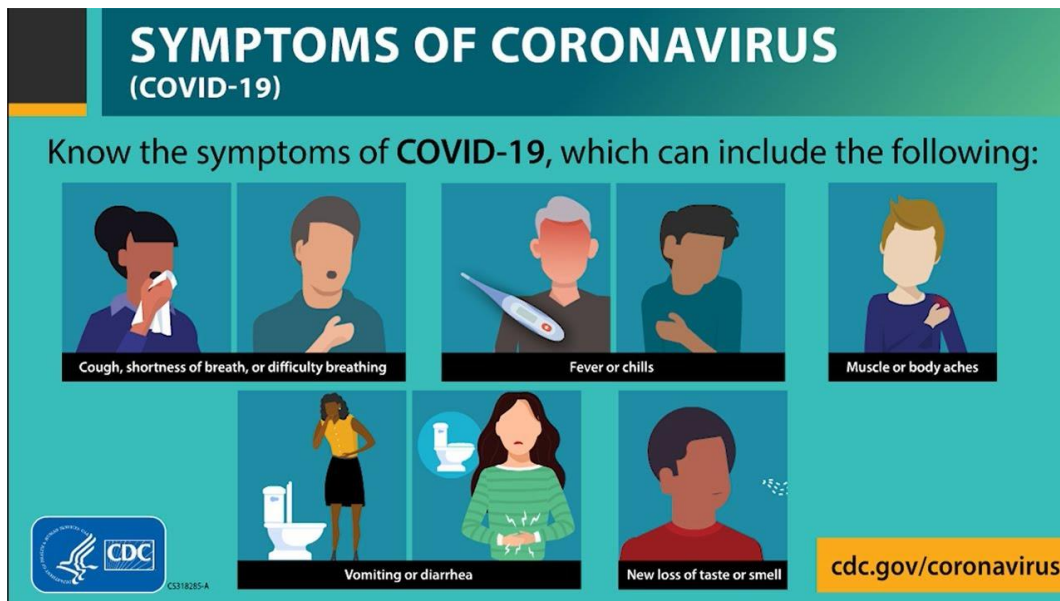
## SELF-SCREEN QUESTIONS: (ASK YOURSELF THESE QUESTIONS BEFORE ENTERING PARK)

1. Have you had any signs or symptoms of a fever in the past 24 hours such as chills, sweats, felt "feverish" or had a temperature that is elevated for you/100.0 F or greater? Yes No
  
2. Do you have any of the following symptoms?
  - Cough Shortness of Breath or Chest Tightness
  - Sore Throat
  - Nasal Congestion/Runny Nose
  - Myalgia (Body Aches)
  - Loss of Taste and/or Smell
  - Diarrhea

- Nausea
- Vomiting
- Fever/Chills/Sweats

3. Have you traveled internationally or outside of state in the last 14 days? Or, have you had any close contact in the last 14 days with someone with a diagnosis of COVID-19? Yes No

If you answered yes to ANY of the above self-screening questions please stay home!



**TESTED POSITIVE FOR COVID-19? OR HAVE YOU BEEN IN CONTACT WITH SOMEONE WHO HAS TESTED POSITIVE FOR COVID-19?**

According to the Arizona Department of Health “Release from isolation and Quarantine Guidance- 7/27/2020” attendants present with the symptom(s) similar to COVID-19 may resume play under one of the following conditions:

- 10 days have passed from when symptoms first appeared, the attendant has been fever-free for 24 hours without the use of fever-reducing medication, and all symptoms are resolving; OR
- The attendant has been tested and is negative for COVID-19, and a copy of the result has been provided to Park Administrator (a copy of results need to be emailed to [contact@tucsonleagues](mailto:contact@tucsonleagues)); OR.

- The attendant has been evaluated by a licensed healthcare provider and can provide the school with a note stating symptoms are not COVID related.

#### TEMPERATURE SCREENING:



Upon your arrival at Sports Park, you may be subject to a temperature screen. If our COVID-19 Safety Official determines that you do not meet the requirements of the screening process you may not be allowed to enter the

park. We appreciate your continued support as we navigate through the new protocols we are being asked to enforce to keep our park open.



#### GUIDELINES FOR EVERYONE:

1. **Masks will be required to enter Sports Park for anyone over the age of 5 years of age**, and must be worn in all **Red Zones** of the park at all times (Entry/Exit, concessions, dugouts, restrooms, and concession lines and anywhere where social distancing may be difficult.) Every other bleachers will be temporarily closed off so

please make sure to bring your own chairs! If attendants/participants/staff have health conditions that do not allow them to wear a face mask, Face Shields or loose scarf may be worn instead of Face Masks. Everyone who



enters the park will need to have a Face Covering which does not include the jacket or shirt work into the facility.

2. Temperature Checks may be taken to ensure participants are kept safe. If temperature is at **100.4 °F** or higher participants/attendees/guests will not be allowed into the park.
3. In the bag check area, when you enter the park, each person will need to show all contents in their bag, backpack, or purse. Our staff will not be touching customer property but will need to see all items you are bringing in. Please keep your personal contents to the essentials so the process can go quickly.
4. All staff, players, umpires, and spectators will need to maintain a 6-foot distance from each other on and off the fields/volleyball courts.
5. We recommend staff, players, umpires, and spectators bring hand sanitizing products. Avoid touching your face and wash your hands frequently.
6. Disinfectant sprays will be provided in all dugouts and volleyball courts. Balls must be sanitized before and after each game/use.
7. Handwashing (recommended at least every 3 hours if not more) and hand sanitizer will be required as often as possible.
8. Minimize player contact by eliminating team/player handshakes & team/player high fives.
9. Spectators should set-up their personal chairs and sit 6-feet away from other teams (only family that resides under the same household will be allowed to sit together).
10. Masks are required to enter the park, to leave the park, any time you use the restrooms go to concessions and any time you cannot keep the 6-foot distance. If you leave the park you may be subject to an additional temperature check. Please keep your 6-feet away from others while in line for food and beverage at concessions and picnic tables. There will be 6ft markers on the floor in the lines for concessions and in the front office area as well. Please make sure and use these markers to keep your 6-ft distance.
11. Only people from the same household will be allowed to be at close range. If you do not reside in the same household the 6ft social distancing rule will be in effect. Wearing a mask does not replace the 6-ft distance when possible.
12. Sneeze/cough into a tissue or elbow.
13. Team captains/Couches will be asked to help enforce social distancing guidelines. Team captains/couches will be asked to keep rosters for each

day played until season is over. Team captains should encourage proper hygiene is being met and that social distancing is being followed the best that they can. Team captains will be held responsible for players who fail to comply and teams may be issued a forfeit if further issues arise from non-compliance.

14. Concessions will not be permitted to fill up cups of ice or personal water bottles at this time, so please make sure to bring enough water for play. No sharing of food and beverage will be allowed.
15. **No sunflower seeds will be allowed in the park at this time. No spitting will be permitted. Violators can be asked to leave and may be subject to suspension for negligence.**
16. No sharing of any food and beverage or coolers.

#### SOFTBALL/BASEBALL GUIDELINES:

1. New softballs will remain in the packaging until they are introduced into the game. All players are recommended to use their own equipment while participating. This includes gloves, bats, etc.
2. The catcher and umpire will be asked to position themselves during a player's at-bat to allow for social distancing.
3. Softball sanitizing in between innings will be required (disinfectant spray will be provided for each dugout).
4. Disinfectant spray bottles will be provided for each dugout so that players spray dugout areas between games.
5. Dugout guidelines:
  - If social distancing cannot be accomplished in the dugouts players will need to wear a face-mask. Only 3 players are allowed in the dugouts at a time. Violation of terms can lead to the closing of dugouts.
  - Teams entering the dugout shall come from the directions coming from the plate towards the dugout and wait for the other team to entirely vacate the dugout. Teams shall exit towards the outfield to avoid contacting the incoming team.

#### VOLLEYBALL GUIDELINES:

1. Volleyballs will be disinfected before and after games.
2. Teams will need to remain on opposing sides in between games.

3. If there is a question during games only one person will be allowed to approach the league coordinator on duty and will need to remain 6ft from each other.
4. Spectators will need to remain 6-feet from players and other spectators as well.
5. Players will need to bring personal towels and use them in between games.
6. We encourage players to disinfect areas where personal belongings will be placed before and after use. (Disinfecting sprays will be available.)

PLEASE REMEMBER THAT PLAYER SAFETY IS PARAMOUNT. NO AMOUNT OF PRECAUTION CAN GUARANTEE A COMPLETELY STERILE ENVIRONMENT, SO ALL PARTICIPANTS AGREE TO PLAY AT THEIR OWN RISK. UPDATED WAIVERS HAVE BEEN RELEASED AND ALL PLAYERS WILL NEED TO SIGN TO RESUME PLAY AT SPORTS PARK.

#### **HAND SANITIZING STATIONS**



A hand sanitizing station will be provided at the entry and exit of the park. Upon arrival please hand sanitize your hands and disinfect any equipment brought in with you. At departure please hand sanitize and use disinfectant to disinfect

equipment before leaving.

#### **BLEACHERS / PICNIC TABLES**

Every other bleachers will remain close until further notice. Please continue to bring your own chairs and canopies to properly secure your 6-foot distance from others (only people from the same house hold can share a canopy). Picnic tables should only be used when sitting down to eat food. Gatherings of over 6 participants in these areas is prohibited and may result in being asked to leave the premises.

#### **FAILURE TO COMPLY**

Individuals who fail to comply with these COVID-19 health and safety procedures noted in this Mitigation plan to protect the health and safety of the community will be asked to leave. Suspension of the entirety of the



league/tournament may also be at stake. No refunds of any kind will be provided if participants fail to comply.

### CONTACTLESS PAYMENT METHODS / PRE-PAID FEES

In order to avoid as much contact as possible admissions can now be paid using Apple Pay, Samsung Pay, Or Cards with the contactless payment sign. If you have any of these contactless methods please let your Admissions agent know upon payment. All league fees must be paid online through our website SportsParkTucson.com or host event directors website. No cash will be accepted for league fees at th



### ADDITONAL SANITIZING

In order to keep visitors safe, restrooms will be getting disinfected regularly throughout the league/event. A sanitizing log will be displayed in each restroom. Hand sanitizing stations will also be disinfected regularly. Playgrounds will be getting sanitized more regularly as well. Parents, if your child is not feeling well or is experiencing any of the COVID-19 symptoms you may be asked to leave the premises immediately with your child. Make sure to prescreen your children before entering the park. Failure to comply may result in getting asked to leave and or suspension or both.

Sanitizing Log			
Date/Time:	By:	Date/Time:	By:

### COVID-19 SAFETY OFFICIAL

A COVID-19 Safety official will be available near the front office. If you would like to report a safety concern (ex: person not wearing face covering, person with a runny nose, person who looks sick, spitting of sunflower seeds, etc) please come find us. This person will be available throughout the event and will be helping enforce the COVID-19 guidelines mentioned in this Mitigation plan. This person will also have the power to ask an attendee/player/staff member to leave if he/she feels that said person is being negligent or is refusing to follow protocols. In addition, this official may take pictures to file official reports for compliance.



*Thank you for your help in keeping the park open and safe! Your cooperation is greatly appreciated. If you have any questions on anything mentioned in this document please contact us at [contact@tucsonleagues.com](mailto:contact@tucsonleagues.com).*